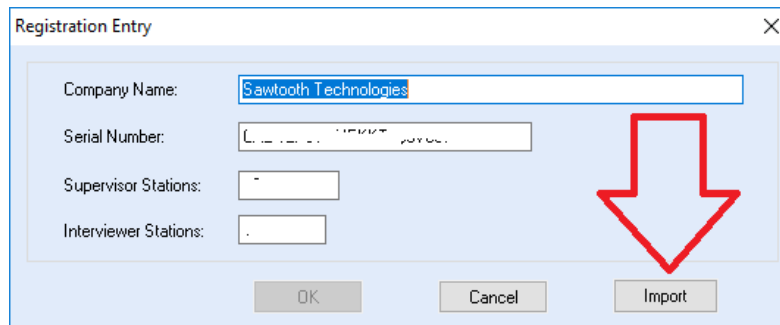


### WINCATI ID

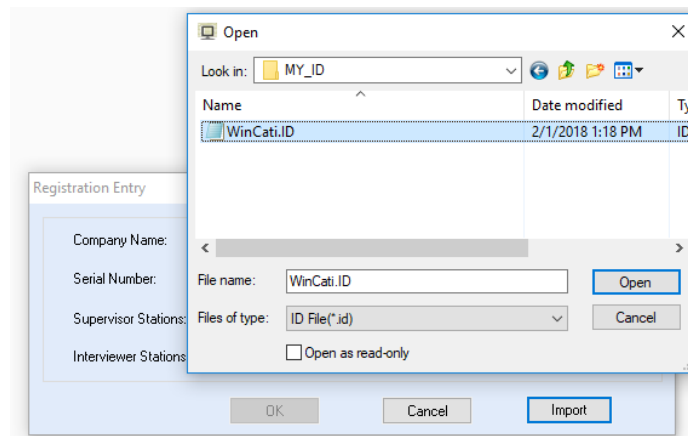
To Install your new Wincati ID, open the Supervisor Application (do not open any study in Supervisor).

Go to HELP and click on Registration Entry



Then click on the “Import” button and browse to the location where you saved your Wincati ID file (file name is typically Wincati.ID).

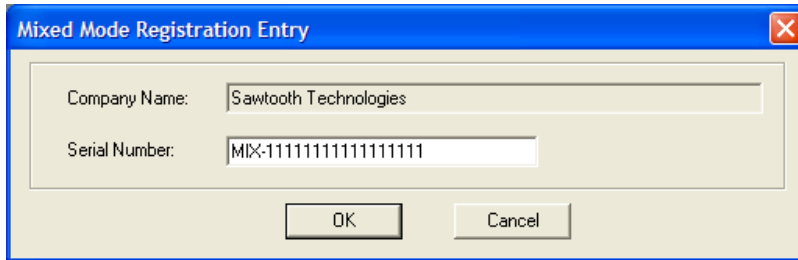
Highlight Wincati.ID file and click OPEN to import the new Wincati ID; click OK to complete the process.



If you purchased any of the following “Add-Ons” (Proactive, PRO-T-S, Voice and Mixed Mode), then follow the “Add-On” procedure below to update “Add-On” licenses.

### WINCATI ADD-ON(s)

Go to HELP | Add-On and click on the Add-On option to be renewed. Open the ID file with any text editor; Copy and paste the license of the specific Add-On.



### SENSUS-SERVER ID

If you do Online Surveys, then you also have a Sensus Server and the license must be updated too.

**NOTE:** Please skip the Sensus-Server section if you don't have Sensus Server for Online Surveys.

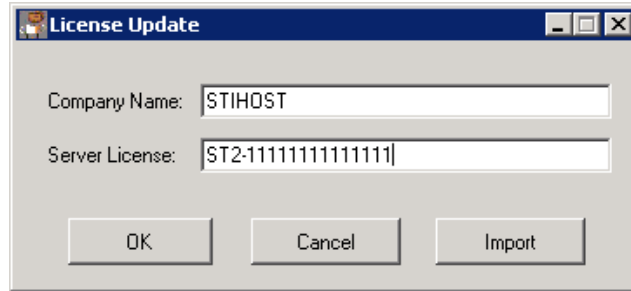
User must be at the Sensus Server console to ensure that this process completes successfully.

Go to the SensusWW directory in the active folder structure of the Sensus Server (... \APPS\STI\SensusWW).

Open the BIN directory under the SensusWW folder and double-click on the file "SSLICENSE.exe". This will open the Sensus Licenses Update screen as shown below.

## Importing v.6.0 User IDs

---



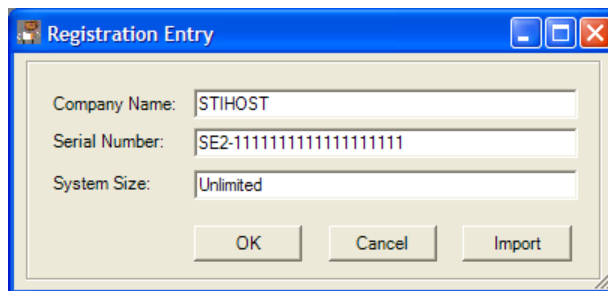
Click on the "Import" button to import ID as described earlier.

## **SENSUS-CREATE ID**

**"Sensus-Create" is the Sensus Client application used for programming your questionnaire.**

Open the Sensus Client Application, but do not open any study.

Go to HELP and click on Registration Entry to open the License Update screen as shown below.



Then click on the "Import" button and browse to the location where you saved your Sensus ID file (file name is typically Sensus.ID if you purchased only Sensus or Wincati.ID if you purchased both Wincati and Sensus).

Highlight the ID file and click OPEN to import the new Sensus ID; click OK to complete the process.